



HEMET UNIFIED SCHOOL DISTRICT

1791 W. Acacia Avenue
Hemet, California 92545
(951) 765-5100

GOVERNING BOARD

Dr. Gregg Figgins
President
Joe Wojcik
Vice President

Lisa DeForest, Member
Marilyn Forst, Member
Charlotte Jones, Member
Phyllis Petri, Member
Bill Sanborn, Member

ADMINISTRATION

Dr. Phil Pendley
Superintendent

Mary Wulfsberg
Deputy Superintendent
Educational Services

La Faye Platter
Assistant Superintendent
Personnel

Richard Beck
Assistant Superintendent
Business Services

CONTENTS

Demographics	2
Average Class Size	2
School Climate	2
School Facilities	3
Teachers	4
Instructional Materials	4
Adopted Textbooks	5
Support Staff	5
School Finances	5
Student Performance	6
Accountability	7
Student Progress	7
Instructional Planning & Scheduling	7
District Map	8

School Accountability Report Card

Reported for School Year 2007-08

Published During 2008-09

Hemet Elementary School

www.hemetusd.k12.ca.us



633 East Kimball Avenue • Hemet, CA 92543 • (951) 765-1630 • Fax (951) 765-1636

Introduction

The School Accountability Report Card (SARC), which is required by law to be published annually, contains information about the condition and performance of each California public school. More information about SARC requirements is available on the SARC Web page at <http://www.cde.ca.gov/ta/ac/sa/>. For additional information about the school, parents and community members should contact the school principal or the district office.

Data and Access

Data

DataQuest is an online data tool located at <http://dq.cde.ca.gov/dataquest/> that contains additional information about this school and comparisons of the school to the district, the county, and the state. Specifically, *DataQuest* is a dynamic system that provides reports for accountability (e.g. Academic Performance Index [API], Adequate Yearly Progress [AYP], test data, enrollment, graduates, dropouts, course enrollments, staffing, and data regarding English learners).

Internet Access

Internet access is available at public libraries and other locations that are publicly accessible (e.g., the California State Library). Access to the Internet at libraries and public locations is generally provided on a first-come, first-served basis. Other use restrictions include the hours of operation, the length of time that a workstation may be used (depending on availability), the types of software programs available on a workstation, and the ability to print documents.

Mission Statement

All students at Hemet Elementary School will become grade level proficient in Language Arts, Mathematics, and English Language Development after three years of continuous attendance at our school. As a Character Counts School our students will also develop appropriate behavior, respect, and appreciation for our community.

Proficiency at Hemet Elementary School will be measured by yearly state assessments (CST), district benchmarks, and school AYP/API. Informal assessment will take place periodically to meet individual needs and improve our instructional practices.

If students do not meet specific learning goals, we will provide interventions using a collaborative approach among teachers, parents, students, and administration. These interventions will include but

are not limited to ongoing parent/teacher involvement and collaboration along with multi-modality instructional strategies that are research based or proven through practice. Motivational strategies and practices will also be included to ensure that all students at Hemet Elementary School will be successful.

Principal's Message

Welcome to Hemet Elementary School! We are a K-5 traditional school, which first opened its doors in April 1927. Hemet Elementary School has a long history of serving the educational needs of the community and promoting academic excellence.

Our staff at Hemet Elementary School is dedicated to the philosophy that all students can learn and are committed to the belief that high expectations promote student achievement and academic excellence. We have embraced the "No Child Left Behind" concept as we have committed ourselves to every child's success.

Welcome to Hemet Elementary where students are soaring to success.

About This School

Hemet Elementary is a successful school where staff, students and parents work as a team to foster high expectations with a commitment to academic excellence with a vision towards preparing children to face the demands of the 21st century.

The community is actively involved at Hemet Elementary School. Being supported by numerous businesses, our Adopt-A-School partners Starbucks Coffee, California Business Bank, Target, Ace Hardware, and Hemet Valley Medical Center Nursing Staff all lend their support to school programs that assist children's quest toward academic excellence.

Its spirit of cooperation marks Hemet Elementary. The instructional program is enhanced through the leadership of a quality teaching staff, instructional aides, support staff and parent involvement. The team at Hemet Elementary is dedicated to the philosophy that all children can learn and are committed to the concept that high expectations fosters student achievement and academic excellence.

District Profile

Hemet Unified School District encompasses one incorporated city and numerous unincorporated communities within its 700+ topographically diverse square miles. We have 29 elementary and secondary schools with an enrollment of over 23,000 students. Agriculture still provides an important economic influence, as do other light and service industries. The rural flavor of the community still survives despite the rapid growth which has taken place in the area.

Average Class Size and Class Size Distribution (Elementary)

This table displays by grade level the average class size and the number of classrooms that fall into each size category (a range of total students per classroom).

Grade Level	2005-06			Avg. Class Size	2006-07			Avg. Class Size	2007-08				
	Avg. Class Size	Number of Classrooms			1-20	21-32	33+		Avg. Class Size	Number of Classrooms			
		1-20	21-32							33+	1-20	21-32	33+
Kindergarten	20.4	6	1	19.3	6			19.8	5	1			
Grade 1	20.2	5	1	21.6		5		19.8	5				
Grade 2	19.4	7		19.9	6	1		18.5	6				
Grade 3	19.4	7		20.7	6	1		20.3	6	1			
Grade 4	26.0		5	29.0		4		28.5		4			
Grade 5	33.5			33.0			4	27.5		4			
K-3				21.0		1							

Parent Involvement

Parent involvement is promoted through our Parent Teacher Association (PTA), School Site Council (SSC) and ELAC. Additionally, parents are encouraged to participate in their child's educational program by being active participants in their child's classroom. The site addresses all areas of parent involvement through their Single Plan For Student Achievement. For more information contact the site Principal, Marco Baeza at (951) 765-1630.

Demographic Information

This table displays the percent of students enrolled at the school who are identified as being in a particular group:

Racial/Ethnic Category	% of Total Enrollment
African-American	6.3
American Indian or Alaska Native	0.43
Asian	0.14
Filipino	1.43
Hispanic or Latino	62.03
Pacific Islander	1.0
White (Not Hispanic)	25.93
Multiple or No Response	2.72
Socioeconomically Disadvantaged	92.0
English Learners	26.0
Students with Disabilities	17.0

School Enrollment by Grade Level

This table displays the number of students enrolled in each grade level as reported by the California Basic Educational Data Systems (CBEDS) in 2007-08:

Grade Level	Enrollment
Kindergarten	100
Grade 1	122
Grade 2	117
Grade 3	125
Grade 4	119
Grade 5	115
Total Enrollment	698

School Climate:

School Safety

SB187 Safety Plan

Date the plan was last updated: May, 2008

Date the plan was last reviewed with staff: May, 2008

The Comprehensive Safe School Plan includes data regarding school crime, safe school procedures and compliance with laws including: (1) child abuse reporting, (2) disaster response, (3) suspension and expulsion policies, (4) notification of teachers of dangerous pupils, (5) sexual harassment, (6) schoolwide dress codes prohibiting gang-related apparel, (7) procedures for safe ingress and egress from school, (8) procedures to ensure a safe and orderly environment conducive to learning, and (9) rules and procedures on school discipline adopted pursuant to Ed Code Sections 35291 and 35291.5. A copy of the plan is available for inspection by the public at each school.

In addition to teachers who have yard duty before school and during recess, five yard supervisors assist with campus safety. Walkie-talkies provide communication with the office.

Routine student safety is provided through the assignment of teachers and paid supervisors for supervision duty during all recess and lunch periods, as well as, before and after school. All visitors and volunteers are required to sign in at the office, state their business at the school, and show identification. They are provided with a visitor tag to wear



School Accountability Report Card

while on school grounds. They must return to sign out at the office at the end of their visit.

A clean, safe, and secure teaching and learning environment is the highest priority to Hemet Elementary administration and staff. For student safety, Hemet Elementary staff conducts monthly fire drills, staff in-services, and has a Disaster Preparedness Plan for earthquake or other emergencies. Staff is trained in emergency procedures, including evacuation routes and safety checks.

School Discipline Practices

Our goal is to create a productive learning environment for our students. To do this we must have clear expectations and fair consequences. Behavior which is disruptive or which hurts others will not be tolerated. Students who violate school rules may be suspended or expelled if necessary. The following table displays the rate of suspensions and expulsions (the total number of incidents divided by the total enrollment) at the school and district levels for the most recent three-year period:

Rate	School			District		
	05-06	06-07	07-08	05-06	06-07	07-08
Suspensions	3.1	7.9	9.5	17.1	15.4	14.8
Expulsions	0.0	0.0	0.3	0.1	0.5	0.6

School Facilities:

Cleaning Process and Schedule

The site administrators, custodian and district personnel conduct routine physical inspections for safety and maintenance. Classrooms and restrooms are cleaned daily. The principal works with the custodial staff to develop cleaning schedules to ensure a clean and safe school. Students are encouraged to have pride in their school and to do their part to keep the school clean.

The district takes great efforts to ensure that all schools are clean, safe, and functional. To assist in this effort, the district uses a facility survey instrument developed by the State of California Office of Public School Construction. The results of this survey are available at the school office or at the district office.

School Facility Good Repair Status (School Year 2008-09)

This table displays the results of the most recently completed school site inspection to determine the school facility's good repair status. On October 2, 2008 facilities validation site visit was conducted at Hemet Elementary School. Based on the field observations the following was found and the district has taken the appropriate action.

Items Inspected	Repair Status			Repair Needed and Action Taken or Planned
	Good	Fair	Poor	
Gas Leaks	X			
Mechanical Systems	X			
Windows/Doors/Gates (interior and exterior)	X			
Interior Surfaces (walls, floors, and ceilings)			X	Stained ceiling tiles in one classroom; two classrooms carpet stained; three classrooms cracks in the walls.
Hazardous Materials (interior and exterior)	X			
Structural Damage			X	One classroom east side of room appears to be sinking; two classrooms appear to be settling.
Fire Safety	X			One classroom fire extinguisher needs to be wall mounted.
Electrical (interior and exterior)		X		Several rooms have lights out and cracked diffuser in one classroom; MPR no covers on the lights.
Pest/Vermin Infestation	X			
Drinking Fountains (inside and outside)	X			Two drinking fountains inoperable.
Restrooms	X			One boy's restroom sink inoperable.
Sewer	X			
Playground/School/Grounds	X			Asphalt areas have cracks.
Roofs	X			Possible roof leaks.
Overall Cleanliness	x			

Overall Summary of School Facility Good Repair Status

This table displays the overall summary of the results of the most recently completed school site inspection.

Item Inspected	Facility Condition			
	Exemplary	Good	Fair	Poor
Overall Summary			X	



Maintenance and Repair

District maintenance staff ensures that the repairs necessary to keep the school in good repair and working order are completed in a timely manner. A work order process is used to ensure efficient service and that emergency repairs are given the highest priority. Regular and corrective maintenance is handled on a priority basis and emergencies are handled immediately.

School Facility Conditions and Improvements

Hemet Elementary School opened its doors in 1927. During the months of September 1991 through March 1992, the school was remodeled under the State Refurbishing Program. The project enhanced the school as a landmark in Hemet. Campus security was enhanced by the installation of fencing and locking gates around the school perimeter.

Deferred Maintenance Fund

The district participates in the State School Deferred Maintenance Program, which provides state matching funds on a dollar-for-dollar basis, to assist school districts with expenditures for major repair or replacement of existing school building components. Typically, this includes roofing, plumbing, heating, air conditioning, electrical systems, interior or exterior painting, and floor systems. For the 2008-09 school year, the district has budgeted \$932,691 for the deferred maintenance program. This represents .5% percent of the district's general fund budget.

New School Construction & Modernization Projects

Rancho Viejo Middle School opened in August 2008 with 1,400 students. Tahquitz High School Phase 2 Classrooms and Phase 3 Stadium are completed. Hemet High School Phase 1 Swimming Pool is under construction. Administration Remodel and Addition is in DSA and is scheduled to start construction in December 2008. The Hemet HS Weightroom is in DSA and scheduled for construction April 2009. Acacia Middle School will undergo major classroom modernization using local funding. The project is in design and will start construction June 2009. Cottonwood Library projected is scheduled for January 2009 construction.

Teachers:

Teacher Credentials

This table displays the number of teachers assigned to the school with a full credential, without a full credential, and those teaching outside their subject area of competence. Detailed information about teacher qualifications can be found at the DataQuest Web site at <http://dq.cde.ca.gov/dataquest/>.

Teachers	School			District
	2005-06	2006-07	2007-08	2007-08
With Full Credential	42	42	40	1058
Without Full Credential	2	0	1	45
Teaching Outside Subject Area of Competence	2	0	1	

Teacher Misassignments and Vacant Teacher Positions

This table displays the number of teacher misassignments (teachers assigned without proper legal authorization) and the number of vacant teacher positions (not filled by a single designated teacher assigned to teach the entire course at the beginning of the school year or semester).

Note: Total Teacher Misassignments includes the number of Misassignments of Teachers of English Learners.

Indicator	2006-07	2007-08	2008-09
Misassignments of Teachers of English Learners	0	0	0
Total Teacher Misassignments	0	0	0
Vacant Teacher Positions	0	0	0

Core Academic Courses Taught by NCLB Compliant Teachers

This table displays the percent of classes in core academic subjects taught by No Child Left Behind (NCLB) compliant and non-NCLB compliant teachers at the school, at all schools in the district, at high-poverty schools in the district, and at low poverty schools in the district. More information on teacher qualifications required under NCLB can be found at <http://www.cde.ca.gov/nclb/sr/tq/>.

Location of Classes	Percent of Classes in Core Academic Subjects	
	Taught by NCLB Compliant Teachers	Taught by Non-NCLB Compliant Teachers
This School	97.1	2.9
All Schools in District	91.1	8.9
High-Poverty Schools in District	92.9	7.1
Low-Poverty Schools in District	78.3	21.7

Curriculum and Instructional Materials:

Instructional Materials

Hemet Elementary School and Hemet Unified School District are committed to a program that provides curriculum and instruction materials that are aligned with the California Content Standards. The district and school site have adopted curriculum that are explicit in their identification and focus on standards. We have implemented the Open Court Language Arts Program in grades K-5. Implementation includes explicit instruction in phonemic awareness and phonics, vocabulary development, reading fluency and comprehension. The staff has developed "Follow-ups" that reinforce skills and standards. Accelerated Reader strengthens reading comprehension and a love of reading. Our math curriculum, Scott Foresman-Addison Wesley enVisionMath, is standards based. Science and Social Studies standards are integrated through out the school day and supported by state adopted texts.

Hemet Elementary School utilizes PC compatible computers located in all individual classrooms. Additionally, individual teacher computers and Accelerated Reader computers have been installed in classrooms. The schoolwide library exists to promote reading, academic achievement and study material. English Now is utilized to promote vocabulary building and second language acquisition schoolwide.



Adopted Textbooks

A District committee considers textbooks for recommendation on a cycle established by the State Board of Education and from a State adopted list. The committee meets to discuss current issues relevant to the subject matter, including student success, previously used textbooks, and instructional methods. The committee reviews demonstration copies of proposed textbooks, as well as listen to representatives describe the various highlights of the available materials. The review is followed by a pilot of materials that results in consensus by the committee of a recommended textbook. The textbook is forwarded to a K-12 Curriculum Council, which consists of teachers, parents, and community stakeholders, for review and approval. If the textbook is approved by the K-12 Curriculum Council, the textbook is forwarded to the Superintendent and the Governing Board for their review and approval. Each pupil in the district, kindergarten through grade twelve, is provided with standards-aligned textbooks or basic instructional materials that are consistent with the content and cycles of the curriculum framework adopted by the State Board. The chart below outlines the adopted textbooks we use in our District.

Grade Level	Course/Content Area	Title	Publisher	Edition	Year Adopted
K-5	Eng/Lang. Arts	Open Court Reading	SRA/McGraw Hill	2002	May 2002
Kind. 1-5	Mathematics	Scott Foresman – Addison Wesley enVisionMath - California	Pearson Scott Foresman	2009	June 2008
K-5	Science	Harcourt Science California Edition	Harcourt Brace	2001	March 2001
K-5	Social Studies	History-Social Science <i>for California</i>	Pearson, Scott-Foresman	2006	June 2007
K-5	Social Studies	Health and Fitness	Harcourt School Pub	2006	July 2005
K-5	ELD	English Now! V 1.3 English Now! V C L 4, 5, 6 Write Time, L 6, 7 – 1 st Ed.	LitConn, Inc. LitConn Inc. Teacher Created Mats	2003 2005 2004	Dec. 2006 June 2007 June 2007
K-5	Health	Harcourt Health & Fitness	Harcourt, Inc.	2006	July 2005
Intervention Programs for Reading / Language Arts					
4-12	Reading/Language Arts	SRA/Reach High Point EI Scholastic Read 180	SRA/McGraw Hill Hampton-Brown Co. Scholastic, Inc.	2002 2001 2002	July 2005
4-7	Mathematics	California Math Triumphs	Glencoe/McGraw-Hill	2008	June 2008

Availability of Textbooks and Instructional Materials

In accordance with Education Code Section 60422(a) and 60119, the Governing Board certified on 10/7/2008 that each pupil in the district, in kindergarten through grade twelve, has been provided with a standards-aligned textbooks or basic instructional materials in each of the areas listed below.

Core Curriculum Areas	Pupils Who Lack Textbooks and Instructional Materials
Reading/Language Arts	0%
Mathematics	0%
Science	0%
History-Social Science	0%
Foreign Language	0%
Health	0%
Visual and Performing Arts	0%

Support Staff:

Support Staff

This table displays, in units of full-time equivalents (FTE), the number of support staff who are assigned to the school. One FTE equals one staff member working full time; one FTE could also represent two staff members who each work 50% of full time.

Title	Number of FTE Assigned to School
Library Media Services (paraprofessional)	1.0
Psychologist	1.0
Speech/Language/Hearing Specialist	1.0
Other (Language Arts/Math Coach)	1.0

School Finance:

Other Programs

To help ensure a quality education for all students, state and federal funding is provided to Hemet Elementary School for the following special programs to supplement the core instructional program provided by the school District:

Program	Amount
Title I	\$99,104
School & Library Improvement Block Grant	\$22,442
EIA/LEP	\$92,737
ELAP	\$24,406
Total	\$238,689

Pupil Expenditures and School Site Teacher Salaries (Fiscal Year 2006-07)

This table displays a comparison of the school's per pupil expenditures from unrestricted (basic) sources with other schools in the district and throughout the state, and a comparison of the average teacher salary at the school site with average teacher salaries at the district and state levels. Detailed information regarding salaries can be found at the Current Expense of Education Web page at <http://www.cde.ca.gov/ds/fd/ec/> and teacher salaries can be found on the Certificated Salaries and Benefits Web page at <http://www.cde.ca.gov/ds/fd/cs/>.

Level	Total Expenditures Per Pupil	Expenditures Per Pupil (Supplemental)	Expenditures Per Pupil (Basic)	Average Teacher Salary
School Site	\$6,133	\$1,445	\$4,688	\$56,381
District			\$5,080	\$62,751
Percent Difference-School Site & District			(8%)	(10%)
State			\$5,300	\$65,008
Percent Difference-School Site & State			(12%)	(13%)

Teacher & Administrative Salaries (Fiscal Year 2006-07)

This table displays district-level salary information for teachers, principals, and superintendents, and compares these figures to the state averages for districts of the same type and size. The table also displays teacher and administrative salaries as a percent of a district's budget, and compares these figures to the state averages for districts of the same type and size. Detailed information regarding salaries can be found at the Certificated Salaries and Benefits Web site at <http://www.cde.ca.gov/ds/fd/cs/>.

Category	District Amount	State Average for Districts in Same Category
Beginning Teacher Salary	\$38,778	\$40,721
Mid-Range Teacher Salary	\$64,198	\$65,190
Highest Teacher Salary	\$84,864	\$84,151
Average Principal Salary (Elem)	\$102,266	\$104,476
Average Principal Salary (MS)	\$106,564	\$108,527
Average Principal Salary (HS)	\$113,768	\$119,210
Superintendent Salary	\$203,730	\$210,769
% of Budget for Teacher Salaries	41.4%	39.9%
% of Budget for Administrative Salaries	6.3%	5.5%

Student Performance:

California Standards Tests (CST)

The California Standards Tests (CST) show how well students are doing in relation to the state content standards. The CSTs include English-language arts and mathematics in grades 2 through 11; science in grades 5, 8, and 9 through 11; and history-social science in grades 8 and 10 through 11. Student scores are reported as performance levels. Detailed information regarding CST results for each grade and proficiency level, including the percent of students not tested, can be found on the Standardized Testing and Reporting (STAR) Results Web page at <http://star.cde.ca.gov>.

CST Results for all Students Three year Comparison

This table displays the percent of students achieving at the Proficient or Advanced level (meeting or exceeding the state standards).

Subject	School			District			State		
	06	07	08	06	07	08	06	07	08
ELA	27	36	42	39	39	43	42	43	46
Math	38	49	55	34	34	37	40	40	43
Science	13	17	27	28	32	39	35	38	46

Note: Scores are not shown when the number of students tested is 10 or less, either because the number of students in this category is too small for statistical accuracy, or to protect student privacy. In no case shall any group score be reported that would deliberately or inadvertently make public the score or performance of any individual student.

CST Results by Student Group Most Recent Year

This table displays the percent of students, by group, achieving at the Proficient or Advanced level (meeting or exceeding the state standards) for the most recent testing period.

Group	Percent of Students Scoring at Proficient or Advanced Level		
	ELA	Math	Science
African American	23	45	*
Hispanic or Latino	41	51	27
White (not Hispanic)	43	63	29
Male	33	54	33
Female	42	55	22
Economically Disadvantaged	40	54	27
English Learners	34	39	25
Students with Disabilities	11	42	*

Note: Scores are not shown when the number of students tested is 10 or less, either because the number of students in this category is too small for statistical accuracy, or to protect student privacy. In no case shall any group score be reported that would deliberately or inadvertently make public the score or performance of any individual student.

California Physical Fitness Test Results

The California Physical Fitness Test is administered to students in grades 5, 7, and 9 only. This table displays by grade level the percent of students meeting fitness standards (scoring in the healthy fitness zone on all six fitness standards) for the most recent testing period. Detailed information regarding the California Physical Fitness Test, and comparisons of a school's test results to the district and state levels, can be found at the Physical Fitness Testing Web site at <http://www.cde.ca.gov/ta/tg/pf/>.

Grade Level	Percent of Students Meeting Fitness Standards (on all six fitness standards)
5	26.5

Note: Scores are not shown when the number of students tested is 10 or less, either because the number of students in this category is too small for statistical accuracy, or to protect student privacy. In no case shall any group score be reported that would deliberately or inadvertently make public the score or performance of any individual student.

Accountability:

Academic Performance Index

The Academic Performance Index (API) is an annual measure of the academic performance and progress of schools in California. API scores range from 200 to 1,000, with a statewide target of 800. Detailed information about the API can be found at the API Web site at <http://www.cde.ca.gov/ta/ac/ap/>.

API Ranks - Three Year Comparison

This table displays the school's statewide and similar schools API ranks. The statewide API rank ranges from 1 to 10. A statewide rank of 1 means that the school has an API score in the lowest 10 percent of all schools in the state, while a statewide rank of 10 means that the school has an API score in the highest 10 percent of all schools in the state. The similar schools API rank reflects how a school compares to 100 statistically matched "similar schools." A similar schools rank of 1 means that the school's academic performance is comparable to the lowest performing 10 schools of the 100 similar schools, while a similar schools rank of 10 means that the school's academic performance is better than at least 90 of the 100 similar schools.

API Rank	2005	2006	2007
Statewide	3	2	5
Similar Schools	6	3	9

API Changes by Student Group

This table displays, by student group, the actual API changes in points added or lost for the past three years, and the most recent API score.

Group	Actual API Change			API Score
	2005-06	2006-07	2007-08	2008
All Students	-3	45	24	771
Hispanic or Latino	-14	51	27	760
White (not Hispanic)	4	43	1	784
Socioeconomically Disadvantaged	-8	53	25	766
English Learners	-7	61	18	721

Adequate Yearly Progress (AYP)

The federal No Child Left Behind Act (NCLB) requires that all schools and districts meet the following Adequate Yearly Progress (AYP) criteria:

- Participation rate on the state's standards-based assessments in English-language arts (ELA) and mathematics.
- Percent proficient on the state's standards-based assessments in ELA and mathematics.
- API as an additional indicator.
- Graduation rate (for secondary schools).

Detailed information about AYP, including participation rates and percent proficient results by student group, can be found at the AYP Web site at <http://www.cde.ca.gov/ta/ac/ay/>.

AYP Overall and by Criteria

This table displays an indication of whether the school and the district made AYP overall and whether the school and the district met each of the AYP criteria.

AYP Criteria	School	District
Overall	Yes	No
Participation Rate—ELA	Yes	Yes
Participation Rate—Mathematics	Yes	Yes
Percent Proficient—ELA	Yes	No
Percent Proficient—Mathematics	Yes	No
API	Yes	Yes

Student Progress

Individual student progress is reported every six weeks in the form of progress reports or report cards. Additionally, some teachers send home weekly progress reports to parents. Two conference weeks are held in October and March to discuss the academic performance of students with parents.

School wide academic progress (AYP, API) is reported in newsletters, staff meetings, local newspapers and the district website.

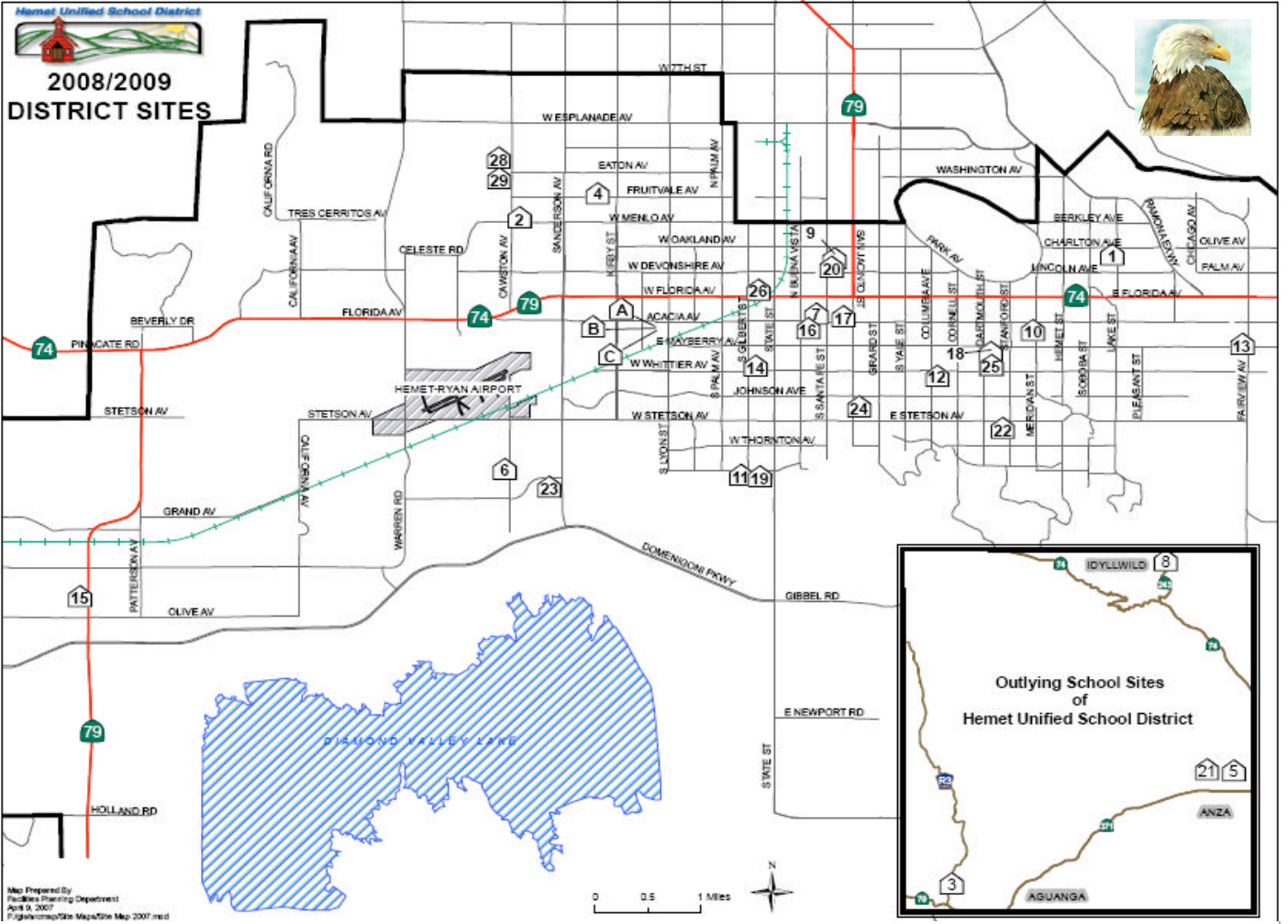
Instructional Planning and Scheduling:

Professional Development

The school district provides all staff members with opportunities for professional growth and training in a variety of programs so that all teachers and paraprofessionals may become highly qualified under the No Child Left Behind law. The focus is on the delivery of a standards-based instructional program. District professional development priorities are outlined in the current LEA addendum as SB472 Language Arts and Mathematics, AB430 Administrative Training, AB 2913 English Learner Authorization, BTSA Induction Support for year one and year two teachers, and specific Special Education trainings. Peer Assistance Review (PAR) is available to veteran teachers who need unique structure and support. Achievement data is used to determine site support and priorities in professional development. Moreover, four BTSA induction support providers, five academic coaches in language arts and mathematics, and five Reading First coaches provide ongoing support in day to day professional development needs for all instructional personnel. The District revised the Technology Plan in 2006 to include opportunities for staff to increase skills in technology application and instruction.

Categorical funds at the district and site level are designated for a Director of Professional Development, a secretary and an eight-hour clerk to coordinate district professional development. The District has a professional development calendar on the website for the 2008-09 school year.

Hemet Elementary School



Site	Number
Bautista Creek	1
Cawston	2
Cottonwood	3
Fruitvale	4
Hamilton Elem	5
Harmony	6
Hemet Elem	7
Idyllwild	8
Jacob Wiens	9
Little Lake	10
McSweeney	11
Ramona	12
Valle Vista	13

Site	Number
Whittier	14
Winchester	15
Preschools	16
Acacia MS	17
Dartmouth MS	18
Diamond Valley MS	19
HAAAT Charter School	20
Hamilton HS	21
Hemet HS	22
West Valley HS	23
Adult Education	24
Esperanza Teen Mother	24
Alessandro HS	24

Site	Number
The Family Tree Learning Center	25
21st Century Site	25
Helen Hunt Jackson	25
H.E.L.P. School	26
Tahquitz HS	28
Rancho Viejo MS	29
Nutrition Center	A
Professional Development Academy	B
Professional Development Center	C