



**HEMET UNIFIED  
SCHOOL DISTRICT**  
1791 W. Acacia Avenue  
Hemet, California 92545  
(951) 765-5100

**GOVERNING BOARD**  
Dr. Gregg Figgins  
President  
Joe Wojcik  
Vice President

Lisa DeForest, Member  
Marilyn Forst, Member  
Charlotte Jones, Member  
Phyllis Petri, Member  
Bill Sanborn, Member

**ADMINISTRATION**

Dr. Phil Pendley  
Superintendent  
  
Mary Wulfsberg  
Deputy Superintendent  
Educational Services  
  
La Faye Platter  
Assistant Superintendent  
Personnel  
  
Richard Beck  
Assistant Superintendent  
Business Services

**Table of Contents**

Demographics	2
Class Size	2
School Climate	2
School Facilities	3
Teachers	4
Instructional Materials	5
Adopted Textbooks	5
School Finance	5
Student Performance	6
Accountability	7
Support Staff	8
Planning & Scheduling	8
District Map	9

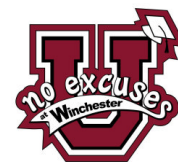
# School Accountability Report Card

Reported for School Year 2007-08

Published During 2008-09

## Winchester Elementary School

www.hemetusd.k12.ca.us



28751 Winchester Road • Winchester, CA 92596 • (951) 926-0700 • Fax (951) 926-0760

### Introduction

The School Accountability Report Card (SARC), which is required by law to be published annually, contains information about the condition and performance of each California public school. More information about SARC requirements is available on the SARC Web page at <http://www.cde.ca.gov/ta/ac/sa/>. For additional information about the school, parents and community members should contact the school principal or the district office.

### Data and Access

**Data**  
*DataQuest* is an online data tool located at <http://dq.cde.ca.gov/dataquest/> that contains additional information about this school and comparisons of the school to the district, the county, and the state. Specifically, *DataQuest* is a dynamic system that provides reports for accountability (e.g. Academic Performance Index [API], Adequate Yearly Progress [AYP], test data, enrollment, graduates, dropouts, course enrollments, staffing, and data regarding English learners).

### Internet Access

Internet access is available at public libraries and other locations that are publicly accessible (e.g., the California State Library). Access to the Internet at libraries and public locations is generally provided on a first-come, first-served basis. Other use restrictions include the hours of operation, the length of time that a workstation may be used (depending on availability), the types of software programs available on a workstation, and the ability to print documents.

### About This School

Winchester Elementary School is located six miles southwest of Hemet in Winchester, California. Tradition is evident at Winchester Elementary School. There are many second and third generation families who have attended W.E.S.. The first two-story school was built in 1884 on three acres in Pleasant Valley. Since that time the site has moved and several buildings have been constructed, which currently allows for our expected growth in student population.

We have a highly motivated and skilled group of teachers. Many of our teachers have master's degrees and others with multiple teaching credentials and supplemental authorizations. We have outstanding and supportive parents who take the education of their children very seriously and are willing to get involved to help improve our school. Our District administration and Governing Board consistently work to support the school staff in maintaining a high level of program effectiveness. As a result of this unity, W.E.S. was recognized by the State of California as a

Title I Achieving School in 2003-2004 school year.

Winchester Elementary School maintains a positive learning climate. It is staffed with goal driven, proactive, and compassionate teachers who seek out resources within the school and parent community to create an environment that allows for, "Success for Every Student."

### Winchester's Mission Statement

Winchester Elementary is committed to creating a school that knows no limits to the academic success of each student.

Therefore it is the mission of Winchester Elementary School to provide its students with an academic environment that supports student's individual potential for learning and personal growth that is enriched by teacher collaboration and community support. Through mutual respect, our children will grow and learn in a positive atmosphere where staff, parents and community are excited about mentoring civic minded life long learners.

### Vision

We envision a school in which staff:

- Unite to achieve a common purpose
- Work together in collaborative teams
- Practice varied instructional strategies for improved student learning
- Monitor each student's progress
- Employ clear and consistent expectations and consequences
- Demonstrate the value of life long learning
- Involve parents and community as valued members of a diverse family
- Create a place where all are enthusiastic about learning

### District Profile

Hemet Unified School District encompasses one incorporated city and numerous unincorporated communities within its 700+ topographically diverse square miles. We have 29 elementary and secondary schools with an enrollment of over 23,000 students. Agriculture still provides an important economic influence, as do other light and service industries. The rural flavor of the community still survives despite the rapid growth which has taken place in the area.

### Parent Involvement

Winchester School addresses all areas of parent involvement through their Single Plan For Student Achievement. For more information, contact the site Principal, Mark Delano at (951) 926-0700.

# Winchester Elementary School

## Average Class Size and Class Size Distribution (Elementary)

This table displays by grade level the average class size and the number of classrooms that fall into each size category (a range of total students per classroom).

Grade Level	2005-06			Avg. Class Size	2006-07			Avg. Class Size	2007-08					
	Avg. Class Size	Number of Classrooms			Avg. Class Size	Number of Classrooms			Avg. Class Size	Number of Classrooms				
		1-20	21-32			33+	1-20			21-32	33+	1-20	21-32	33+
Kindergarten	19.3	4		21.8	3	1		19.4	5					
Grade 1	19.0	4		19.0	6			19.2	6					
Grade 2	14.4	7		19.0	8			16.8	6					
Grade 3	17.0	3		19.4	5			19.7	6					
Grade 4	30.0		2	30.7		3		31.0		3				
Grade 5	29.5		2	32.7		1	2	32.0		3				
4-5	29.0		1					28.0		1				

### Principal's Message

It is my pleasure to be the principal at Winchester Elementary School. W.E.S. is a team of students, staff, parents, and community all working together to provide a successful educational experience for our children. We believe there is strength in this unity.

Our students benefit from our strong curriculum, which includes music, art, physical education, math, and a balanced literacy program. Our strong curriculum coupled along with our years of successful teaching experience, ongoing collaborative planning and high student expectations continue to support our students.

Our English Language Parent Advisory Committee (ELPAC), Parent Teacher Association (PTA), and Action Team for Partnership (ATP) represent our many parent volunteers. Parents and the community are an integral part of Winchester Elementary. These groups support varied programs for students including educational assemblies, materials for the classrooms, field trips, and the Fall Festival. With ongoing support, we expect to continue to show outstanding student growth and achievement.

Here at Winchester Elementary School we remain focused on our goal of "Success for Every Student" and we look forward to celebrating the accomplishments of our students together.

### School Enrollment by Grade Level

This table displays the number of students enrolled in each grade level as reported by the California Basic Educational Data Systems (CBEDS) in 2007-08:

Grade Level	Enrollment
Kindergarten	97
Grade 1	115
Grade 2	114
Grade 3	124
Grade 4	105
Grade 5	114
<b>Total Enrollment</b>	<b>669</b>

### Demographic Information

This table displays the percent of students enrolled at the school who are identified as being in a particular group:

Racial/Ethnic Category	% of Total Enrollment
African American	7.32
American Indian or Alaska Native	0.6
Asian	1.49
Filipino	3.29
Hispanic or Latino	53.36
Pacific Islander	0.45
White (Not Hispanic)	28.7
Multiple or No Response	4.78
Socioeconomically Disadvantaged	79.0
English Learners	28.0
Students with Disabilities	9.0

### School Climate:

#### School Safety

##### SB187 Safety Plan

**Date the plan was last updated:** October, 2008

**Date the plan was last reviewed by the staff:** October, 2008

The Comprehensive Safe School Plan includes data regarding school crime, safe school procedures and compliance with laws including: (1) child abuse reporting, (2) disaster response, (3) suspension and expulsion policies, (4) notification of teachers of dangerous pupils, (5) sexual harassment, (6) schoolwide dress codes prohibiting gang-related apparel, (7) procedures for safe ingress and egress from school, (8) procedures to ensure a safe and orderly environment conducive to learning, and (9) rules and procedures on school discipline adopted pursuant to Ed Code Sections 35291 and 35291.5. A copy of the plan is available for inspection by the public at each school.

Routine student safety is provided through the assignment of teachers and paid supervisors for supervision duty during all recess and lunch periods, as well as, before and after school. Disaster preparedness drills are conducted monthly. The school has a current disaster

preparedness and safety plan. All visitors and volunteers are required to sign in at the office, state their business at the school, and show identification. They are provided with a visitor tag to wear while on school grounds. They must return to sign out at the office at the end of their visit.

Fire drills are conducted monthly and the staff is trained in emergency procedures, including evacuation routes and safety checks.

### School Discipline Practices

Our goal is to create a productive learning environment for our students. To do this we must have clear expectations and fair consequences. Behavior which is disruptive or which hurts others will not be tolerated. Students who violate school rules may be suspended or expelled if necessary. The following table displays the rate of suspensions and expulsions (the total number of incidents divided by the total enrollment) at the school and district levels for the most recent three-year period:

	School			District		
	05-06	06-07	07-08	05-06	06-07	07-08
Suspensions	5.1	10.9	0.9	17.1	15.4	14.8
Expulsions	0.0	0.0	0.0	0.1	0.5	0.6

### School Facilities:

#### Maintenance and Repair

District maintenance staff ensures that the repairs necessary to keep the school in good repair and working order are completed in a timely manner. A work order process is used to ensure efficient service and that emergency repairs are given the highest priority. Regular and corrective maintenance is handled on a priority basis and emergencies are handled immediately.

#### New School Construction & Modernization Projects

Rancho Viejo Middle School opened in August 2008 with 1,400 students. Tahquitz High School Phase 2 Classrooms and Phase 3 Stadium are completed. Hemet High School Phase 1 Swimming Pool is under construction. Administration Remodel and Addition is in DSA and is scheduled to start construction in December 2008. The Hemet HS Weightroom is in DSA and scheduled for construction January 2009. Acacia Middle School will undergo major classroom modernization using local funding. The project is in design and will start construction June 2009. Cottonwood Library projected is scheduled for January 2009 construction.

### School Facility Good Repair Status (School Year 2008-09)

This table displays the results of the most recently completed school site inspection to determine the school facility's good repair status. On April 8, 2008 facilities validation site visit was conducted at Winchester Elementary School. Based on the field observations the following was found and the district has taken the appropriate action.

Item Inspected	Repair Status			Repair Needed and Action Taken or Planned
	Good	Fair	Poor	
Gas Leaks	X			
Mechanical Systems	X			One classroom HVAC not operable.
Windows/Doors/Gates (interior and exterior)	X			Five classrooms adjust safety screens to latch; adjust south window in one classroom to open.
Interior Surfaces (walls, floors, and ceilings)		X		Several classrooms stained/loose ceiling tiles; clean around HVAC vents in three classroom; one classroom carpet badly stained; stain in new carpet.
Hazardous Materials (interior and exterior)	X			
Structural Damage	X			
Fire Safety	X			Fire alarm has "trouble" light on in admin/teacher lounge.
Electrical (interior and exterior)		X		Admin/teacher lounge women's restroom bulb out; several other classrooms light fixtures out; one boys restroom hand dryer inoperable.
Pest/Vermin Infestation	X			One classroom evidence of rodents.
Drinking Fountains (inside and outside)	X			Adjust drinking fountains in three classroom; one drinking fountain needs to be attached/tightened.
Restrooms	X			Spitwads on walls and ceiling in boy's restroom.
Sewer	X			
Roofs	X	X		Possible roofs leaking in several classrooms.
Playground/School/Grounds				Asphalt uneven, tripping hazard.
Overall Cleanliness	X			Two classrooms need better cleaning overall; one boy's restroom smelled/dirty; one classroom cobwebs and smells musty.

## Overall Summary of School Facility Good Repair Status

This table displays the overall summary of the results of the most recently completed school site inspection.

Item Inspected	Facility Condition			
	Exemplary	Good	Fair	Poor
<b>Overall Summary</b>		X		



### **Cleaning Process and Schedule**

The site administrators, custodian and district personnel conduct routine physical inspections for safety and maintenance. Classrooms and restrooms are cleaned daily. The principal works with the custodial staff to develop cleaning schedules to ensure a clean and safe school. Students are encouraged to have pride in their school and to do their part to keep the school clean.

The district takes great efforts to ensure that all schools are clean, safe, and functional. To assist in this effort, the district uses a facility survey instrument developed by the State of California Office of Public School Construction. The results of this survey are available at the school office or at the district office.

### **Deferred Maintenance Fund**

The district participates in the State School Deferred Maintenance Program, which provides state matching funds on a dollar-for-dollar basis, to assist school districts with expenditures for major repair or replacement of existing school building components. Typically, this includes roofing, plumbing, heating, air conditioning, electrical systems, interior or exterior painting, and floor systems. For the 2008-09 school year, the district has budgeted \$932,691 for the deferred maintenance program. This represents .5% percent of the district's general fund budget.

### **Facility Conditions and Planned Improvements**

Winchester School provides a safe, clean environment for learning. Our school has 45 regular classrooms. The school is on a 12-acre site and has been built in stages since the late 1950's. The most recent permanent addition was completed in 1987 and consisted of a new cafeteria, office, workroom complex, a Kindergarten complex, and six classrooms.

### **Teachers:**

#### **Teacher Credentials**

This table displays the number of teachers assigned to the school with a full credential, without a full credential, and those teaching outside their subject area of competence. Detailed information about teacher qualifications can be found at the DataQuest Web site at <http://dq.cde.ca.gov/dataquest/>.

Teachers	School			District
	2005-06	2006-07	2007-08	2008
<b>With Full Credential</b>	26	32	32	1058
<b>Without Full Credential</b>	0	0	0	45
<b>Teaching Outside Subject Area of Competence</b>	0	0	0	

### **Teacher Misassignments and Vacant Teacher Positions**

This table displays the number of teacher misassignments (teachers assigned without proper legal authorization) and the number of vacant teacher positions (not filled by a single designated teacher assigned to teach the entire course at the beginning of the school year or semester).

Note: Total Teacher Misassignments includes the number of Misassignments of Teachers of English Learners.

Indicator	2006-07	2007-08	2008-09
<b>Misassignments of Teachers of English Learners</b>	0	0	0
<b>Total Teacher Misassignments</b>	0	0	0
<b>Vacant Teacher Positions</b>	0	0	0

### **Core Academic Courses Taught by NCLB Compliant Teachers**

This table displays the percent of classes in core academic subjects taught by No Child Left Behind (NCLB) compliant and non-NCLB compliant teachers at the school, at all schools in the district, at high-poverty schools in the district, and at low poverty schools in the district. More information on teacher qualifications required under NCLB can be found at <http://www.cde.ca.gov/nclb/sr/tq/>.

Location of Classes	Percent of Classes in Core Academic Subjects	
	Taught by NCLB Compliant Teachers	Taught by Non-NCLB Compliant Teachers
<b>This School</b>	96.8	3.2
<b>All Schools in District</b>	91.1	8.9
<b>High-Poverty Schools in District</b>	92.9	7.1
<b>Low-Poverty Schools in District</b>	78.3	21.7

### **Curriculum and Instruction:**

#### **Instructional Materials**

Winchester Elementary School and Hemet Unified School District are committed to a program that provides curriculum and instructional materials that are aligned with the California Content Standards. The district and school site have adopted curriculum that are explicit in their identification and focus on standards. We have implemented the Open Court Language Arts Program in grades K-5. Implementation includes explicit instruction in phonemic awareness and phonics, vocabulary development, reading fluency and comprehension. Our math curriculum, Saxon Math, is standards based. Science and Social Studies standards are integrated through out the day and supported by state adopted texts.

Our school library is available to all classes and students. We have a large variety of books at all reading levels, including some in Spanish. Many of our library books are marked with their corresponding Accelerated Reader level codes so that students know which books are in their current reading level. In addition to computers and the Internet in every classroom, Winchester also has a computer lab for student and teacher use. In this lab the students use a variety of software including word processing and curriculum enrichment in language arts, math, science, and social studies. Learning to research topics on the Internet is also a key component of our lab activities.

## Adopted Textbooks

A District committee considers textbooks for recommendation on a cycle established by the State Board of Education and from a State adopted list. The committee meets to discuss current issues relevant to the subject matter, including student success, previously used textbooks, and instructional methods. The committee reviews demonstration copies of proposed textbooks, as well as listen to representatives describe the various highlights of the available materials. The review is followed by a pilot of materials that results in consensus by the committee of a recommended textbook. The textbook is forwarded to a K-12 Curriculum Council, which consists of teachers, parents, and community stakeholders, for review and approval. If the textbook is approved by the K-12 Curriculum Council, the textbook is forwarded to the Superintendent and the Governing Board for their review and approval. Each pupil in the district, kindergarten through grade twelve, is provided with standards-aligned textbooks or basic instructional materials that are consistent with the content and cycles of the curriculum framework adopted by the State Board. The chart below outlines the adopted textbooks we use in our District.

ADOPTED TEXTBOOKS K-5					
Grade Level	Course/Content Area	Title	Publisher	Edition	Year Adopted
K-5	Eng/Lang. Arts	Open Court Reading	SRA/McGraw Hill	2002	May 2002
Kind. 1-5	Mathematics	Scott Foresman – Addison Wesley enVisionMath - California	Pearson Scott Foresman	2009	June 2008
K-5	Science	Harcourt Science California Edition	Harcourt Brace	2001	March 2001
K-5	Social Studies	History-Social Science <i>for California</i>	Pearson, Scott-Foresman	2006	June 2007
K-5	Social Studies	Health and Fitness	Harcourt School Pub	2006	July 2005
K-5	ELD	English Now! V 1.3 English Now! V C L 4, 5, 6 Write Time, L 6, 7 – 1 <sup>st</sup> Ed.	LitConn, Inc. LitConn Inc. Teacher Created Mats	2003 2005 2004	Dec. 2006 June 2007 June 2007
K-5	Health	Harcourt Health & Fitness	Harcourt, Inc.	2006	July 2005
Interventions Programs for Reading/Language Arts					
4-12	Reading/Language Arts	SRA/Reach High Point EI Scholastic Read 180	SRA/McGraw Hill Hampton-Brown Co. Scholastic, Inc.	2002 2001 2002	July 2005
4-7	Mathematics	California Math Triumphs	Glencoe/McGraw-Hill	2008	June 2008

## Instructional Materials

On October 7, 2008 the Board unanimously approved the adoption of the Resolution regarding Sufficiency of Instructional Materials for fiscal year 2008-2009 pursuant to Education Code 60119. This table displays the results of that resolution.

Core Curriculum Areas	Pupils Who Lack Textbooks and Instructional Materials
Reading/Language Arts	0%
Mathematics	0%
Science	0%
History-Social Science	0%
Foreign Language	0%
Health	0%
Visual and Performing Arts	0%

## School Finance:

### Other Programs

To help ensure a quality education for all students, state and federal funding is provided to Winchester Elementary School for the following special programs to supplement the core instructional program provided by the school District:

Program	Amount
Title I	\$71,592
School & Library Improvement Block Grant	\$21,143
EIA/LEP	\$69,005
ELAP	\$17,371
<b>Total</b>	<b>\$179,111</b>





# Winchester Elementary School

## Pupil Expenditures and School Site Teacher Salaries (Fiscal Year 2006-07)

This table displays a comparison of the school's per pupil expenditures from unrestricted (basic) sources with other schools in the district and throughout the state, and a comparison of the average teacher salary at the school site with average teacher salaries at the district and state levels. Detailed information regarding salaries can be found at the Current Expense of Education Web page at <http://www.cde.ca.gov/ds/fd/ec/> and teacher salaries can be found on the Certificated Salaries and Benefits Web page at <http://www.cde.ca.gov/ds/fd/cs/>.

Level	Total Expenditures Per Pupil	Expenditures Per Pupil (Supplemental)	Expenditures Per Pupil (Basic)	Average Teacher Salary
School Site	\$5,807	\$777	\$5,030	\$61,216
District			\$5,080	\$62,751
Percent Difference-School Site & District			(1%)	(2%)
State			\$5,300	\$65,008
Percent Difference-School Site & State			(5%)	(6%)

## Teacher & Administrative Salaries (Fiscal Year 2006-07)

This table displays district-level salary information for teachers, principals, and superintendents, and compares these figures to the state averages for districts of the same type and size. The table also displays teacher and administrative salaries as a percent of a district's budget, and compares these figures to the state averages for districts of the same type and size. Detailed information regarding salaries can be found at the Certificated Salaries and Benefits Web site at <http://www.cde.ca.gov/ds/fd/cs/>.

Category	District Amount	State Average for Districts in Same Category
Beginning Teacher Salary	\$38,778	\$40,721
Mid-Range Teacher Salary	\$64,198	\$65,190
Highest Teacher Salary	\$84,864	\$84,151
Average Principal Salary (Elem)	\$102,266	\$104,476
Average Principal Salary (MS)	\$106,564	\$108,527
Average Principal Salary (HS)	\$113,768	\$119,210
Superintendent Salary	\$203,730	\$210,769
% of Budget for Teacher Salaries	41.4%	39.9%
% of Budget for Administrative Salaries	6.3%	5.5%

## Student Performance:

### California Physical Fitness Test Results

The California Physical Fitness Test is administered to students in grades 5, 7, and 9 only. This table displays by grade level the percent of students meeting fitness standards (scoring in the healthy fitness zone on all six fitness standards) for the most recent testing period. Detailed information regarding the California Physical Fitness Test, and comparisons of a school's test results to the district and state levels, can be found at the Physical Fitness Testing Web site at <http://www.cde.ca.gov/ta/tg/pf/>.

Grade Level	Percent of Students Meeting Fitness Standards (on all six fitness standards)
5	48.1

Note: Scores are not shown when the number of students tested is 10 or less, either because the number of students in this category is too

small for statistical accuracy, or to protect student privacy. In no case shall any group score be reported that would deliberately or inadvertently make public the score or performance of any individual student.

## California Standards Tests (CST)

The California Standards Tests (CST) show how well students are doing in relation to the state content standards. The CSTs include English-language arts and mathematics in grades 2 through 11; science in grades 5, 8, and 9 through 11; and history-social science in grades 8 and 10 through 11. Student scores are reported as performance levels. Detailed information regarding CST results for each grade and proficiency level, including the percent of students not tested, can be found at the Standardized Testing and Reporting (STAR) Results Web site at <http://star.cde.ca.gov>.

### CST Results for all Students Three year Comparison

This table displays the percent of students achieving at the Proficient or Advanced level (meeting or exceeding the state standards).

Subject	School			District			State		
	06	07	08	06	07	08	06	07	08
ELA	31	37	38	39	39	43	42	43	46
Math	45	51	47	34	34	37	40	40	43
Science	6	18	31	28	32	39	35	38	46

Note: Scores are not shown when the number of students tested is 10 or less, either because the number of students in this category is too small for statistical accuracy, or to protect student privacy. In no case shall any group score be reported that would deliberately or inadvertently make public the score or performance of any individual student.



## CST Results by Student Group Most Recent Year

This table displays the percent of students, by group, achieving at the Proficient or Advanced level (meeting or exceeding the state standards) for the most recent testing period.

Group	Percent of Students Scoring at Proficient or Advanced Level		
	English-Language Arts	Mathematics	Science
African American	30	31	*
Filipino	53	71	*
Hispanic or Latino	31	40	25
White (not Hispanic)	51	61	45
Male	35	47	29
Female	38	45	33
Economically Disadvantaged	34	44	27
English Learners	19	32	12
Students with Disabilities	14	30	*

Note: Scores are not shown when the number of students tested is 10 or less, either because the number of students in this category is too small for statistical accuracy, or to protect student privacy. In no case shall any group score be reported that would deliberately or inadvertently make public the score or performance of any individual student.

### Accountability:

#### Academic Performance Index

The Academic Performance Index (API) is an annual measure of the academic performance and progress of schools in California. API scores range from 200 to 1,000, with a statewide target of 800. Detailed information about the API can be found at the API Web site at <http://www.cde.ca.gov/ta/ac/ap/>.

#### API Ranks - Three Year Comparison

This table displays the school's statewide and similar schools API ranks. The statewide API rank ranges from 1 to 10. A statewide rank of 1 means that the school has an API score in the lowest 10 percent of all schools in the state, while a statewide rank of 10 means that the school has an API score in the highest 10 percent of all schools in the state. The similar schools API rank reflects how a school compares to 100 statistically matched "similar schools." A similar schools rank of 1 means that the school's academic performance is comparable to the lowest performing 10 schools of the 100 similar schools, while a similar schools rank of 10 means that the school's academic performance is better than at least 90 of the 100 similar schools.

API Rank	2005	2006	2007
Statewide	3	3	4
Similar Schools	1	6	6

## API Changes by Student Group

This table displays, by student group, the actual API changes in points added or lost for the past three years, and the most recent API score.

Group	Actual API Change			API Score
	2005-06	2006-07	2007-08	2008
All Students	-38	23	-5	740
Hispanic or Latino	36	30	9	724
White (not Hispanic)	58	19	-26	774
Socioeconomically Disadvantaged	35	26	-9	721
English Learners	-8	12	-1	677

## Adequate Yearly Progress (AYP)

The federal No Child Left Behind Act (NCLB) requires that all schools and districts meet the following Adequate Yearly Progress (AYP) criteria:

- Participation rate on the state's standards-based assessments in English-language arts (ELA) and mathematics.
- Percent proficient on the state's standards-based assessments in ELA and mathematics.
- API as an additional indicator.
- Graduation rate (for secondary schools).

Detailed information about AYP, including participation rates and percent proficient results by student group, can be found at the AYP Web site at <http://www.cde.ca.gov/ta/ac/ay/>.

## AYP Overall and by Criteria

This table displays an indication of whether the school and the district made AYP overall and whether the school and the district met each of the AYP criteria.

AYP Criteria	School	District
Overall	No	No
Participation Rate—English-Language Arts	Yes	Yes
Participation Rate—Mathematics	Yes	Yes
Percent Proficient—English-Language Arts	No	No
Percent Proficient—Mathematics	Yes	No
API	Yes	Yes



## Federal Intervention Program

Schools and districts receiving federal Title I funding enter Program Improvement (PI) if they do not make AYP for two consecutive years in the same content area (English-language arts or mathematics) or on the same indicator (API or graduation rate). After entering PI, schools and districts advance to the next level of intervention with each additional year that they do not make AYP. Detailed information about PI identification can be found at the AYP Web site at <http://www.cde.ca.gov/ta/ac/ay/>.

Indicator	School	District
Program Improvement Status	In PI	In PI
First Year of Program Improvement Implementation	2005-2006	2004-2005
Year in Program Improvement	Year 3	Year 3
Number of Schools Currently in Program Improvement		13
Percent of Schools Currently in Program Improvement		46.4

## Support Staff:

### Support Staff

This table displays, in units of full-time equivalents (FTE), the number of support staff who are assigned to the school. One FTE equals one staff member working full time; one FTE could also represent two staff members who each work 50% of full time.

Title	Number of FTE Assigned to School
Library Media Services (paraprofessional)	1.0
Psychologist	0.5
Speech/Language/Hearing Specialist	0.5
Resource Specialist (non-teaching)	1.0

## Instructional Planning and Scheduling:

### Professional Development

The school district provides all staff members with opportunities for professional growth and training in a variety of programs so that all teachers and paraprofessionals may become highly qualified under the No Child Left Behind law. The focus is on the delivery of a standards-based instructional program. District professional development priorities are outlined in the current LEA addendum as SB472 Language Arts and Mathematics, AB430 Administrative Training, AB 2913 English Learner Authorization, BTSA Induction Support for year one and year two teachers, and specific Special Education trainings. Peer Assistance Review (PAR) is available to veteran teachers who need unique structure and support. Achievement data is used to determine site support and priorities in professional development. Moreover, four BTSA induction support providers, five academic coaches in language arts and mathematics, and five Reading First coaches provide ongoing support in day to day professional development needs for all instructional personnel. The District revised the Technology Plan in 2006 to include opportunities for staff to increase skills in technology application and instruction.

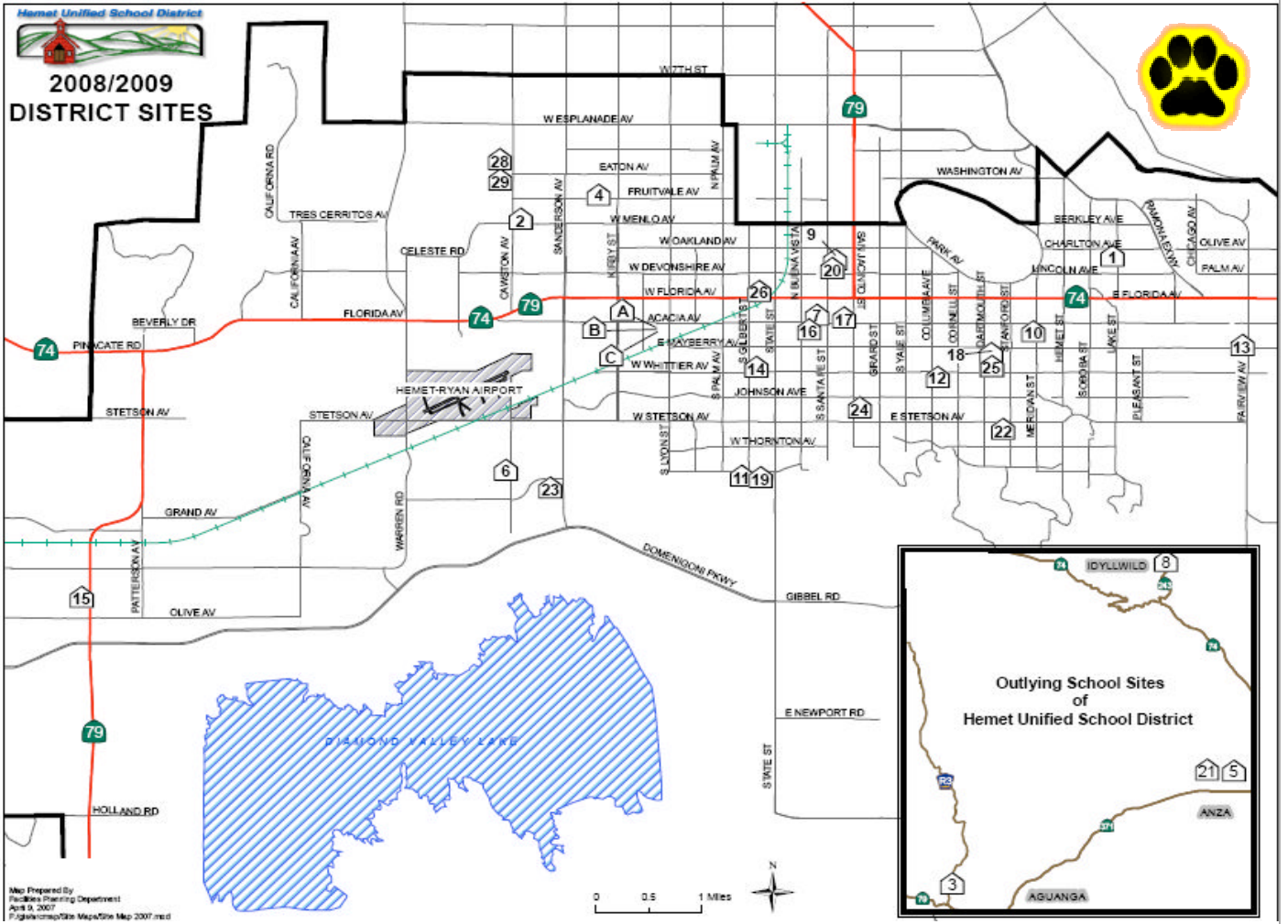
Categorical funds at the district and site level are designated for a Director of Professional Development, a secretary and an eight-hour clerk to coordinate district professional development. The District has a professional development calendar on the website for the 2008-09 school year.

Curriculum development at Winchester continues to emphasize reading (literature based and phonics supported), language arts, mathematics, student learning styles, multiple intelligences authentic assessment measures, thematic teaching, cooperative learning, parent involvement, and specific instructional strategies.





# Winchester Elementary School



Site	Number
Bautista Creek	1
Cawston	2
Cottonwood	3
Fruitvale	4
Hamilton Elem	5
Harmony	6
Hemet Elem	7
Idyllwild	8
Jacob Wiens	9
Little Lake	10
McSweeny	11
Ramona	12
Valle Vista	13

Site	Number
Whittier	14
Winchester	15
Preschools	16
Acacia MS	17
Dartmouth MS	18
Diamond Valley MS	19
HAAAT Charter School	20
Hamilton HS	21
Hemet HS	22
West Valley HS	23
Adult Education	24
Esperanza Teen Mother	24
Alessandro HS	24

Site	Number
The Family Tree Learning Center	25
21st Century Site	25
Helen Hunt Jackson	25
H.E.L.P. School	26
Tahquitz HS	28
Rancho Viejo MS	29
Nutrition Center	A
Professional Development Academy	B
Professional Development Center	C